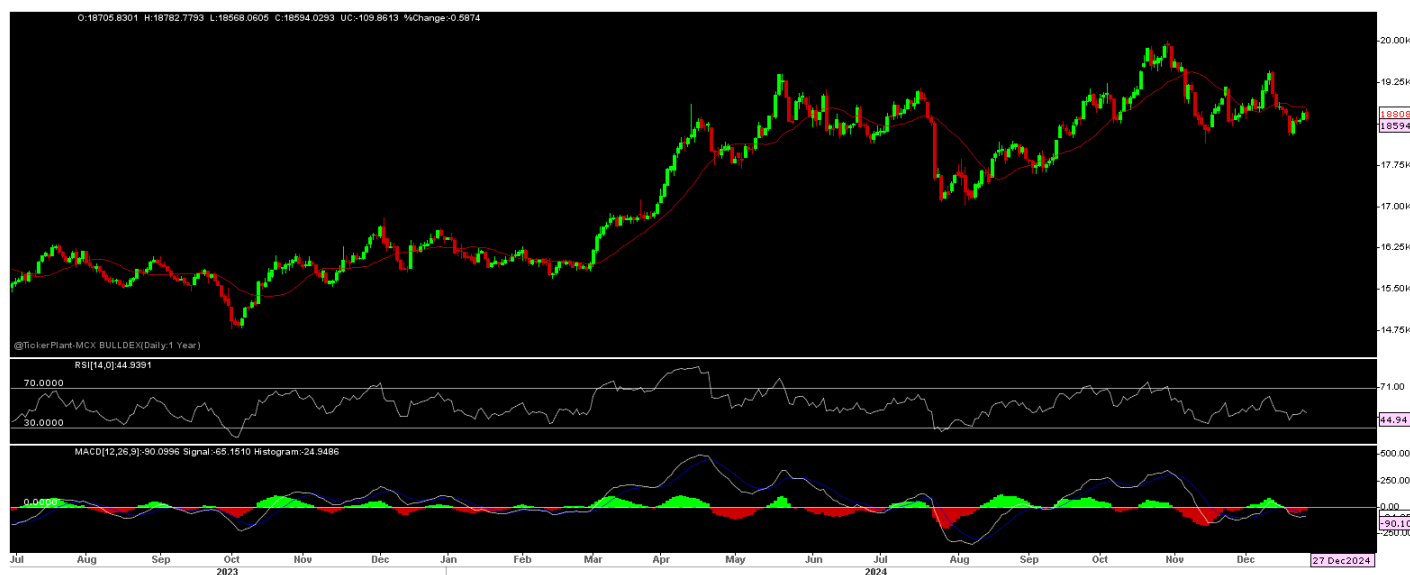




## Daily Technical Outlook: Metals and Energy Dec 30th, 2024

### Bullion Index



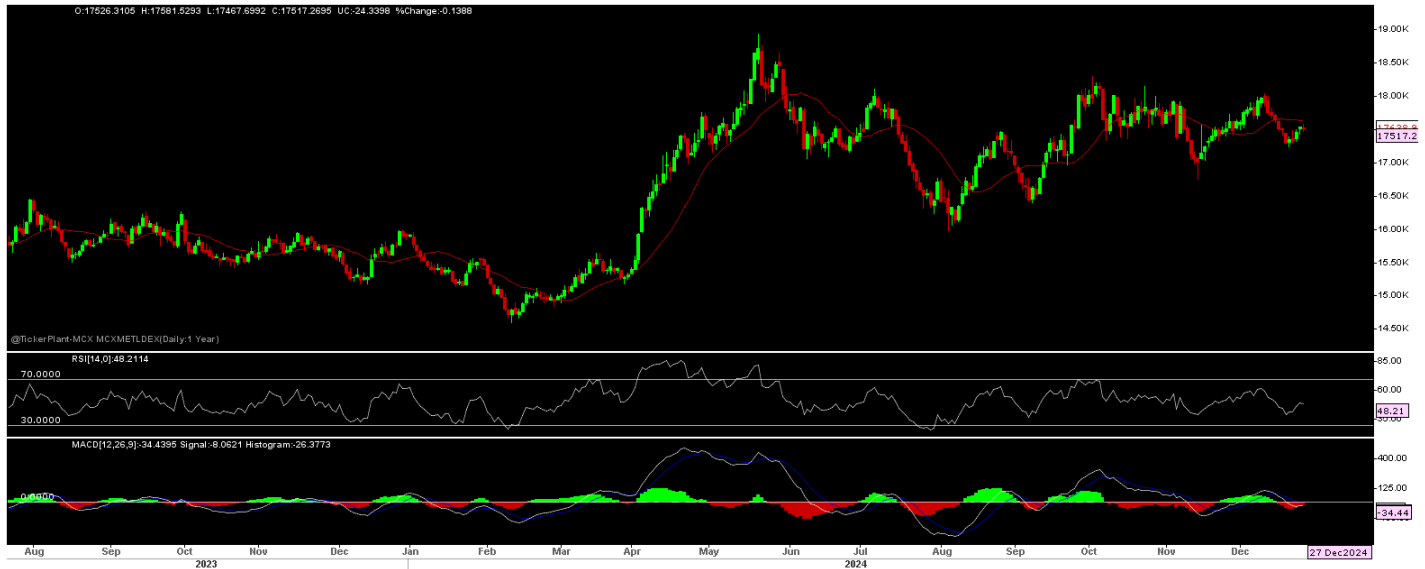
Sources – Ticker Plant and Bonanza Research

The Benchmark index witnessed a Flat Opening on 27/12/24 and remain on side ways to lower side through out the day as thin holiday trading week, while pressure seen from gain in US Bond yield as well dollar index while profit booking at higher level after this week gain weigh on prices and which all resulted in index close near days low and well below over previous day close.

Now, Index has Resistance at 18900-19100, as long hold, more Downside expected towards 18200-17850-650/upto 17100-17000 in short term. Other side only Sustain above 19100-19500 seen again 20100-20200 in days to come.

Price is trading below short term 13-days SMA and RSI at 45 mark with Downward slope indicates more room for down side in the counter. Other side below zero line MACD seen pressure at every rally.

## Metals Index



Sources – Ticker Plant and Bonanza Research

The Benchmark index seen a Flat Opening on 27/12/24 and remain on lower side through out the day pressure by gain in dollar index and wait for fresh stimulus from top metal consumer China and which all resulted in index close almost flat over previous day closing.

Now index has a Resistance at 17650-850-18050, as long hold, more Downside expected towards 17250-17000 upto 16750 in medium term. While on higher side only sustain above 18050 seen 18300-18500 again in days to come.

Price is trading below short term 13 SMA while RSI at 48-marks with Downward slope indicates more room for Down side in the counter. Other side slight below zero line MACD indicates more selling pressure at every rally in the counter.

## Technical Levels

Commodity	Contract Month	CLOSE	S1	S2	R1	R2	TREND
BULLIONS(Rs.)							
Gold M	Jan	75783	75600	75350	76200	76500	BEARISH
Silver M	Feb.	88972	88600	88000	89800	90300	BEARISH

### ENERGY

Crude Oil	Jan.	6035	5960	5920	6050	6100	BULLISH
Natural Gas	Jan.	284.30	278	270	296	302	BEARISH

### BASE METALS

Copper	Jan.	806.45	795.0	785	810	815	SIDEWAYS
--------	------	--------	-------	-----	-----	-----	----------

<b>Zinc</b>	<b>Jan.</b>	<b>282.85</b>	<b>281.0</b>	<b>279.0</b>	<b>284.50</b>	<b>286.0</b>	<b>BULLISH</b>
<b>Lead</b>	<b>Jan.</b>	<b>177.90</b>	<b>175</b>	<b>173</b>	<b>180</b>	<b>184</b>	<b>SIDEWAYS</b>
<b>Nickel</b>	<b>Jan.</b>	<b>1331.50</b>	<b>1300</b>	<b>1250</b>	<b>1400</b>	<b>1450</b>	<b>SIDEWAYS</b>

### Technical Research Analyst

Vibhu Ratandhara

### Disclosure:

M/s. Bonanza Portfolio Ltd here by declares that views expressed in this report accurately reflect view point with subject to companies/securities. M/s. Bonanza Portfolio Ltd has taken reasonable care to achieve and maintain independence and objectivity in making any recommendations. The Analysts engaged in preparation of this Report or his/her relative: - (a) do not have any financial interests in the subject company mentioned in this Report; (b) do not own 1% or more of the equity securities of the subject company mentioned in the report as of the last day of the month preceding the publication of the research report; (c) do not have any material conflict of interest at the time of publication of the Report. The Analysts engaged in preparation of this Report:- (a) have not received any compensation from the subject company in the past twelve months; (b) have not managed or co-managed public offering of securities for the subject company in the past twelve months; (c) have not received any compensation for investment banking or merchant banking or brokerage services from the subject company in the past twelve months; (d) have not received any compensation for products or services other than investment banking or merchant banking or brokerage services from the subject company in the past twelve months; (e) has not received any compensation or other benefits from the subject company or third party in connection with the Report; (f) has not served as an officer, director or employee of the subject company; (g) is not engaged in market making activity for the subject company.

M/s. Bonanza Portfolio Ltd operates under the regulation of SEBI Regn No. INH100001666 and research analyst engaged in preparation of report

**Disclaimer:**

This research report has been published by M/s. Bonanza portfolio Ltd and is meant solely for use by the recipient and is not for circulation. This document is for information purposes only and information / opinions / views are not meant to serve as a professional investment guide for the readers. Reasonable care has been taken to ensure that information given at the time believed to be fair and correct and opinions based thereupon are reasonable, due to the nature of research it cannot be warranted or represented that it is accurate or complete and it should not be relied upon as such. If this report is inadvertently sent or has reached to any individual, same may be ignored and brought to the attention of the sender. Preparation of this research report does not constitute a personal recommendation or take into account the particular investment objectives, financial situations, or needs of individual clients. Past performance is not a guide for future performance. This Report has been prepared on the basis of publicly available information, internally developed data and other sources believed by Bonanza portfolio Ltd to be reliable. This report should not be taken as the only base for any market transaction; however this data is representation of one of the support document among other market risk criterion. The market participant can have an idea of risk involved to use this information as the only source for any market related activity. The distribution of this report in definite jurisdictions may be restricted by law, and persons in whose custody this report comes, should observe, any such restrictions. The revelation of interest statements integrated in this analysis are provided exclusively to improve & enhance the transparency and should not be treated as endorsement of the views expressed in the analysis. The price and value of the investments referred to in this report and the income from them may go down as well as up. Bonanza portfolio Ltd or its directors, employees, affiliates or representatives do not assume any responsibility for, or warrant the accuracy, completeness, adequacy and reliability of such information / opinions / views. While due care has been taken to ensure that the disclosures and opinions given are fair and reasonable, none of the directors, employees, affiliates or representatives of M/s. Bonanza portfolio Ltd shall be liable. Research report may differ between M/s. Bonanza portfolio Ltd RAs and other companies on account of differences in, personal judgment and difference in time horizons for which recommendations are made. Research entity has not been engaged in market making activity for the subject company. Research analyst has not served as an officer, director or employee of the subject company. Research analyst have not received any compensation/benefits from the Subject Company or third party in connection with the research report

M/s. Bonanza Portfolio Ltd at Bonanza House, Plot No. M-2, Cama Industrial Estate. Walbhat Road, Goregaon (E), Mumbai – 400063 Web site: <https://www.bonanzaonline.com>

SEBI Regn. No.: INZ000212137

BSE CM: INB 011110237 | BSE F&O: INF 011110237 | MSEI: INE 260637836

| CDSL: a) 120 33500 |

